

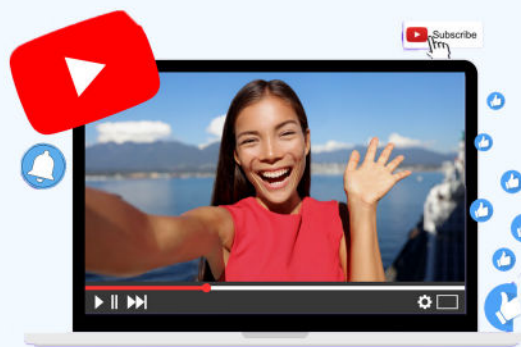
# Why Should You Use **YouTube** SMM Panel Services?



FULLSMM

# Increased Visibility:

**YouTube SMM Panel** services work to enhance your channel's visibility by increasing the number of subscribers, video views, likes, and comments. A heightened presence on YouTube can lead to greater brand recognition and trust among users.



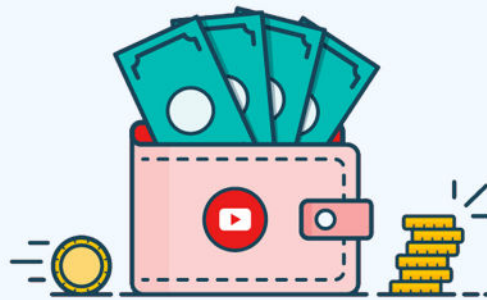
# Higher Engagement:

By boosting key engagement metrics, these services can help foster a more active and engaged community around your brand. Higher engagement often leads to better retention rates and more shares, spreading your content to a wider audience.



# Time and Cost Efficiency:

Building a substantial subscriber base and encouraging engagement on YouTube can be time-consuming. SMM Panel services automate these tasks, enabling you to allocate more time to creating quality content. Additionally, these services tend to be more cost-effective compared to traditional advertising methods.



# Targeted Marketing:

With access to YouTube's vast user data, SMM Panel services can help tailor your marketing strategies to reach a specific target audience. This targeted approach can result in more effective campaigns and higher conversion rates.



# Comprehensive Analytics:

Most **SMM Panel services** provide detailed analytics, offering valuable insights into your audience's behavior and preferences. This data can be crucial in refining your content strategy and marketing efforts to better cater to your audience.



# Improved SEO Rankings:

An active YouTube channel with high engagement rates can significantly enhance your Search Engine Optimization (SEO) efforts. As your videos gain more views and shares, it can help improve your website's search engine rankings, attracting more organic traffic.

